

Newsletter – June 2015

Public Health Profiles 2015

Public Health England has published the 2015 Health Profiles for local authorities. The information contained in the profiles has been used to update a number of indicators in **STREAM**, particularly those included in the Joint Strategic Needs Assessment (JSNA) theme.

The profiles are available to download directly from the Public Health England web site at www.healthprofiles.info. They cover a wide range of health indicators including life expectancy, health inequalities and lifestyle factors which impact health such as obesity, smoking and drug misuse.

The profiles are updated on an annual basis, with data from previous releases also available both within **STREAM** and from the Public Health England web site.

To check on the latest updates to figures within **STREAM**, including health information, but also for the full range of information within the system, download our data set list from <http://www.streamlis.org.uk/QuickLink.aspx?id=438> and use the filters within the spreadsheet to select the indicator and geographical level for which information is required.



Ward boundaries changes

The district and unitary authority ward boundaries in some parts of North Yorkshire and York have recently changed, following a report by the Local Government Boundary Commission for England. The ward boundaries in Hambleton, Selby and York have been substantially revised and were operational for the May 2015 elections.

The new boundaries will be used in **STREAM** for subsequent releases of statistics at ward level. Look out for data appearing in the system for 'Wards 2015' over the coming months.

Community Award Nominations

North Yorkshire County Council has launched a new community awards scheme to recognise and celebrate voluntary work carried out by people and organisations countywide. Winners will receive £1,000 towards their project, group or nominated local charity.



The award categories are Best community project award; Best community group award; Volunteer of the year; and Young people volunteering award.

More information and the online nominations form can be found at <http://www.northyorks.gov.uk/communityawards>

Nominations close on 31 July 2015. Finalists will be invited to the North Yorkshire Wider Partnership Conference on the morning of Friday 16 October 2015, where the winners will be announced and presented with their awards.

Indices of Deprivation 2015

The Indices of Deprivation are currently being updated. The new indices are expected to be released in September 2015. This will be the first update since 2010 of the indices which include the Index of Multiple Deprivation (IMD) together with a number of other detailed indicators which measure levels of relative deprivation across small geographical areas throughout England.

The information will once again be available at Lower Super Output Area (LSOA) level. The definitions of the indices will be broadly similar to those used in the 2010 data set. This will allow changes in relative levels of deprivation over time to be monitored.



The new Indices of Deprivation data will be made available in **STREAM** together with maps and more detailed analysis as soon as they become available.

Social Mobility Index

An index of social mobility has been produced by the Sutton Trust. It ranks the 533 parliamentary constituencies in England according to five measures of social mobility through education.



Looking at outcomes from the early years through to professional life, the data shows how well each constituency is doing in improving prospects for their most disadvantaged young people.

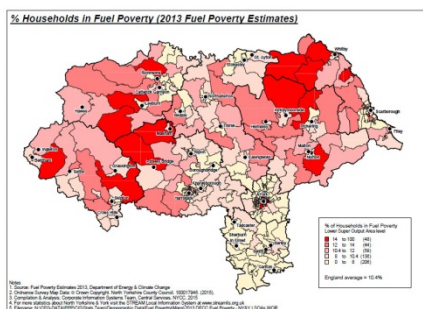
A table which includes detailed rankings for each of the parliamentary constituencies in North Yorkshire and York is available to download from the **STREAM** Document Library at <http://www.streamlis.org.uk/QuickLink.aspx?id=1119> while an interactive map of the results covering all of the constituencies in England and the full report are available at <http://www.suttontrust.com/researcharchive/mobility-map-background/>

STREAM user survey

Thank you to everyone who took part in our user survey, which we carried out in March and April. We have received some very useful feedback, particularly on the uses that people make of the data in the system and on the demand for additional types of information. We will be using this to shape the future development of **STREAM** over the coming months.

Fuel Poverty update

New estimates of the proportion of households which experience fuel poverty have been released by the Department of Energy & Climate Change (DECC). The new estimates, for 2013, show that the percentage of households in fuel poverty have declined consistently across all local authorities in North Yorkshire and York since 2011, though many areas still have levels of fuel poverty which are above the national average.



A map showing levels of fuel poverty at small area (Lower Super Output Area) level is available in **STREAM** at <http://www.streamlis.org.uk/QuickLink.aspx?id=1120> while the detailed national figures from the report are available in the system at <http://www.streamlis.org.uk/QuickLink.aspx?id=1122>