

Scarborough District Profile

Produced January 2015

Scarborough summary

Scarborough district is a coastal area covering the seaside towns of Scarborough, Whitby and Filey.

Scarborough is the most deprived area of North Yorkshire. Twelve neighbourhoods in Scarborough town and two in Whitby are amongst the 20% most deprived in the country.



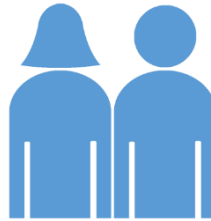
The population is old and ageing – the number of over 70s are expected to increase by 64% by 2035

There is considerable inequalities in the district - the gap in life expectancy between the most deprived and least deprived areas is 11 years for men and 5.8 years for women.

School attainment is below the county and the national average. Unemployment levels are the highest in the county.

The people of Scarborough

108,200 people live in Scarborough district, 18% of the North Yorkshire total



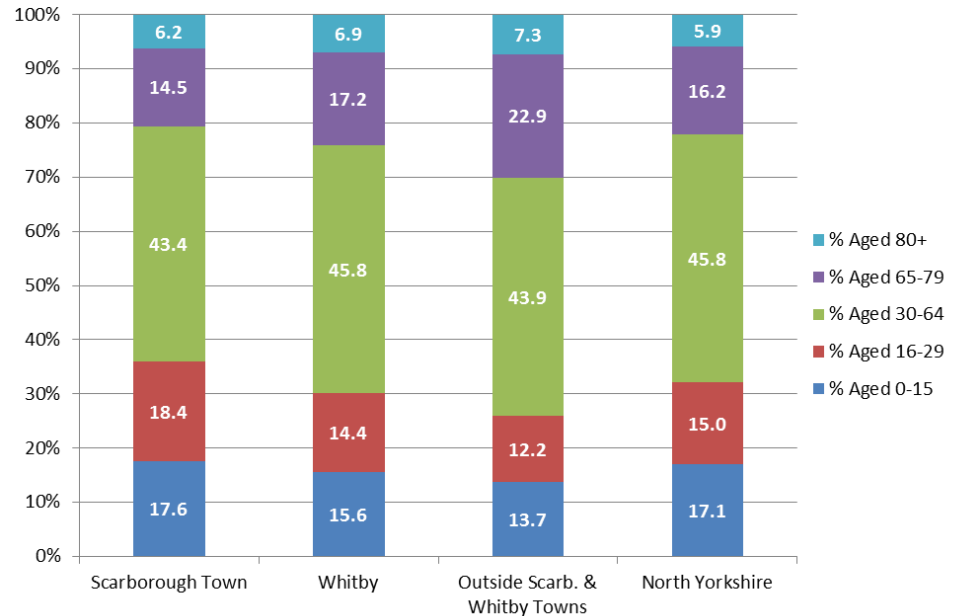
5,400 children aged 0-5 live in Scarborough district, 17% of North Yorkshire under 5s

21,000 children & young people aged 0-18 live in Scarborough district, 17% of the North Yorkshire total



2.1% of Scarborough town residents are Asian/Asian British compared with 0.8% in Whitby, 0.5% in the district outside the two towns and 1.2% across the county 2011 Census

Population Age Structure (2013)



2.2% of Scarborough town residents were born in EU Accession countries compared with a North Yorkshire average of 1.2

2011 Census

The people of Scarborough



2,800 more people in total across Scarborough district by 2037, a 2.5% increase to 111,400

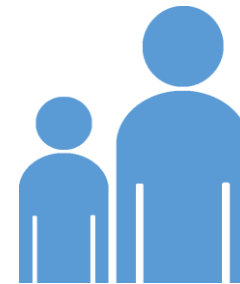
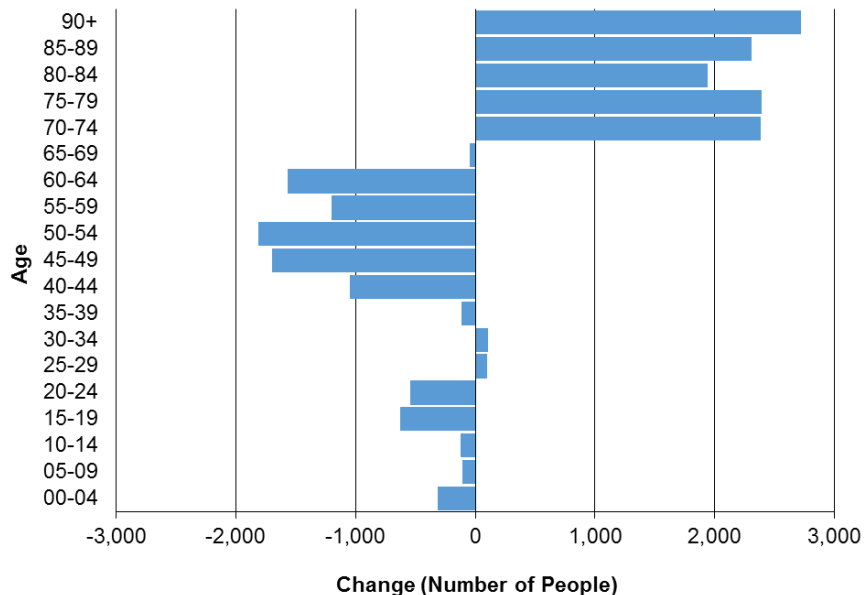
ONS 2012-based Sub-national Population Projections



11,800 additional over 70s across Scarborough district within 25 years, a 64% increase

ONS 2012-based Sub-national Population Projections

Population Change 2012 to 2037 in Scarborough Borough
(2012-based Subnational Population Projections)



7,300 fewer people aged 40-64 and **1,200** fewer aged 0-19 in Scarborough district by 2037

ONS 2012-based Sub-national Population Projections

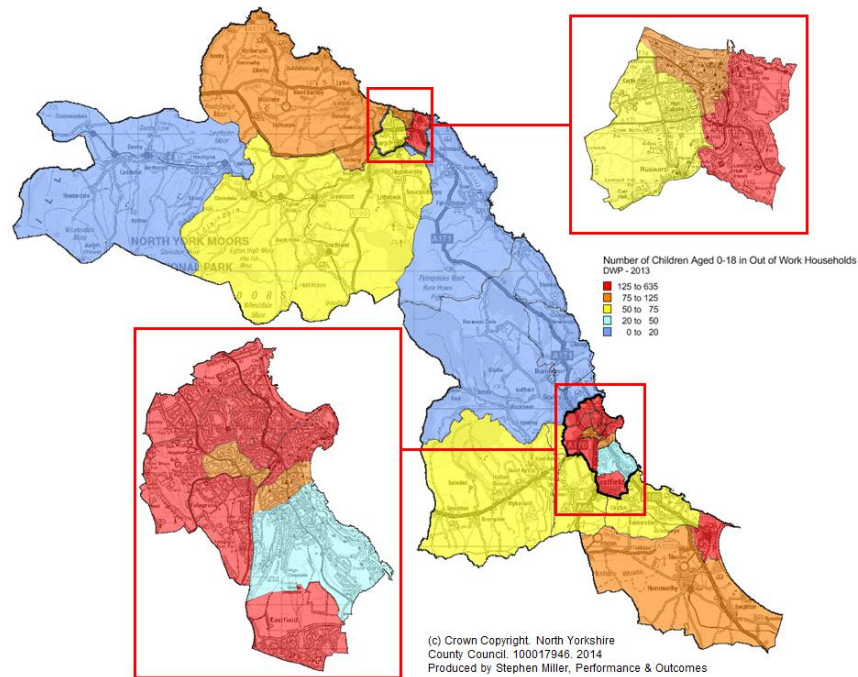
Find more population information on



www.DataNorthYorkshire.org

Deprivation impacting on families

Children in Households Claiming Out of Work Benefits (2013)



3,900 children live in households claiming out of work benefits in Scarborough district (19% of children aged 0-18 in the area compared to 9.5% across North Yorkshire)

20% of children in Scarborough live in poverty compared to 11% across North Yorkshire

Source: HMRC 2011

Child poverty is most prevalent in: Central, Eastfield, Falsgrave Park, Filey, Mulgrave, North Bay, Ramshill, Strensallh, Woodlands wards

Source: NYCC Child Poverty Index (CPI)

North Yorkshire has **18** Lower Level Super Output Area's in the 20% most deprived in the country - **14** in the Scarborough District or which **12** are in Scarborough town and **2** in Whitby

Source: Indices of Deprivation 2010, DCLG

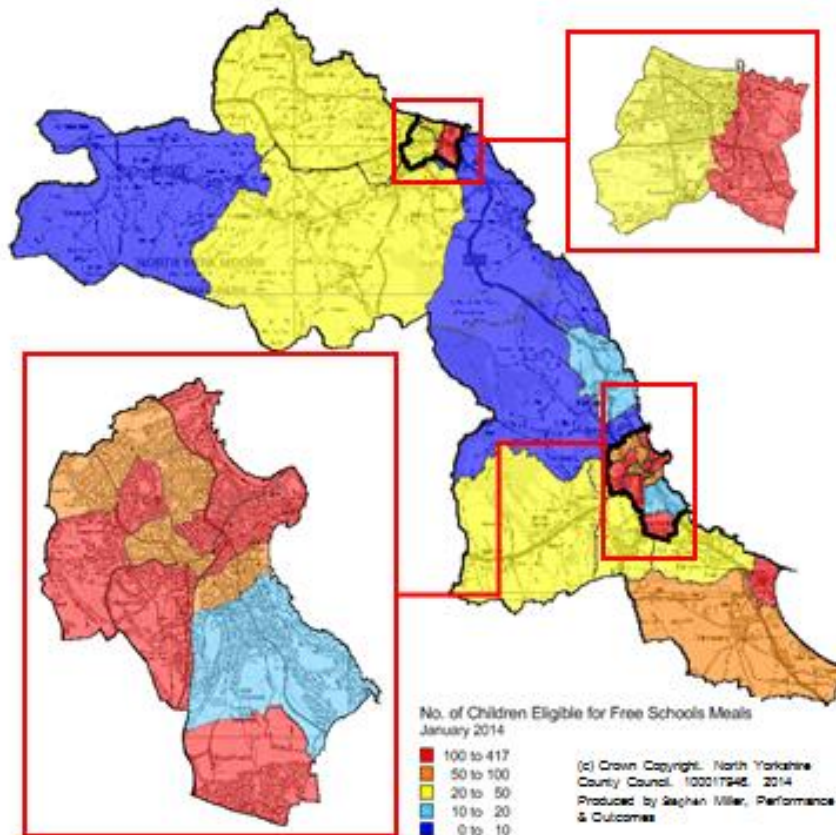
Find more deprivation data on



www.DataNorthYorkshire.org

Deprivation impacting on families

Children Eligible for Free School Meals – Jan 14



Life expectancy is **11.0** years lower for men and **5.8** years lower for women in the most deprived areas of Scarborough district than the least deprived areas

North Yorkshire Local Assistance Fund

46% of applications to the North Yorkshire Local Assistance Fund are from Scarborough district

- **62%** of Scarborough applications are classed as 'family under exceptional pressure' compared to **54%** for North Yorkshire

Source: NYLAF data 2013/14

Developing stronger families

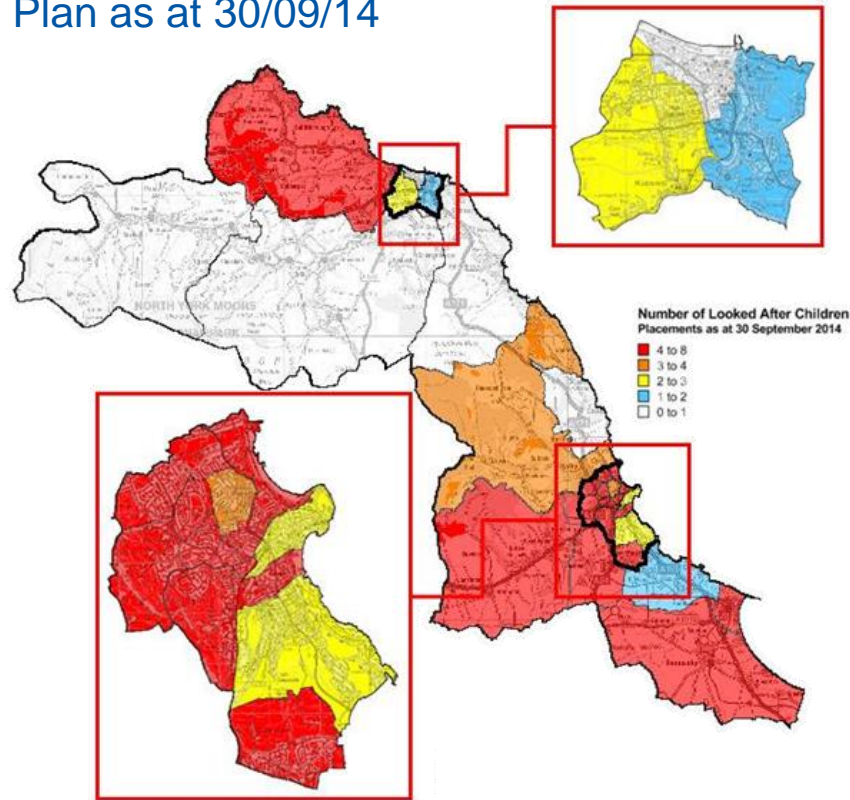
21% of all developing stronger families live in the lower super output areas that are within the bottom 20% within the country

37.4% of all developing stronger families live in Scarborough district

30% of all developing stronger families live in Scarborough town

CYPS - Vulnerable Groups

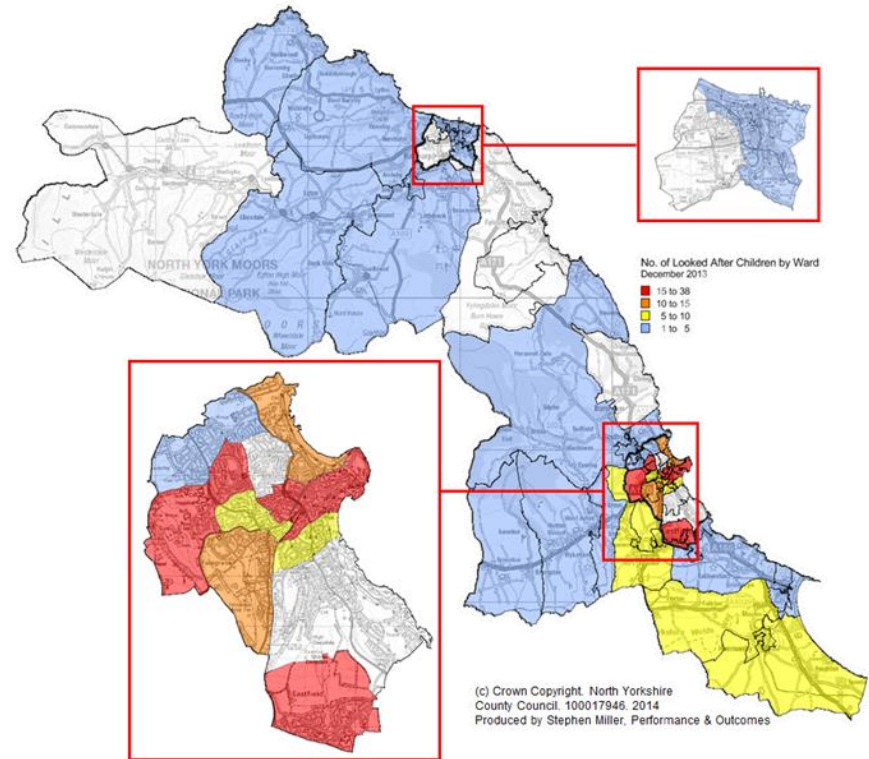
Children Subject to a Child Protection Plan as at 30/09/14



138 children subject to a Child Protection Plan in Scarborough town, 20 in Whitby and 19 in the district outside of the two towns. 449 across North Yorkshire.

Source: NYCC September 2014

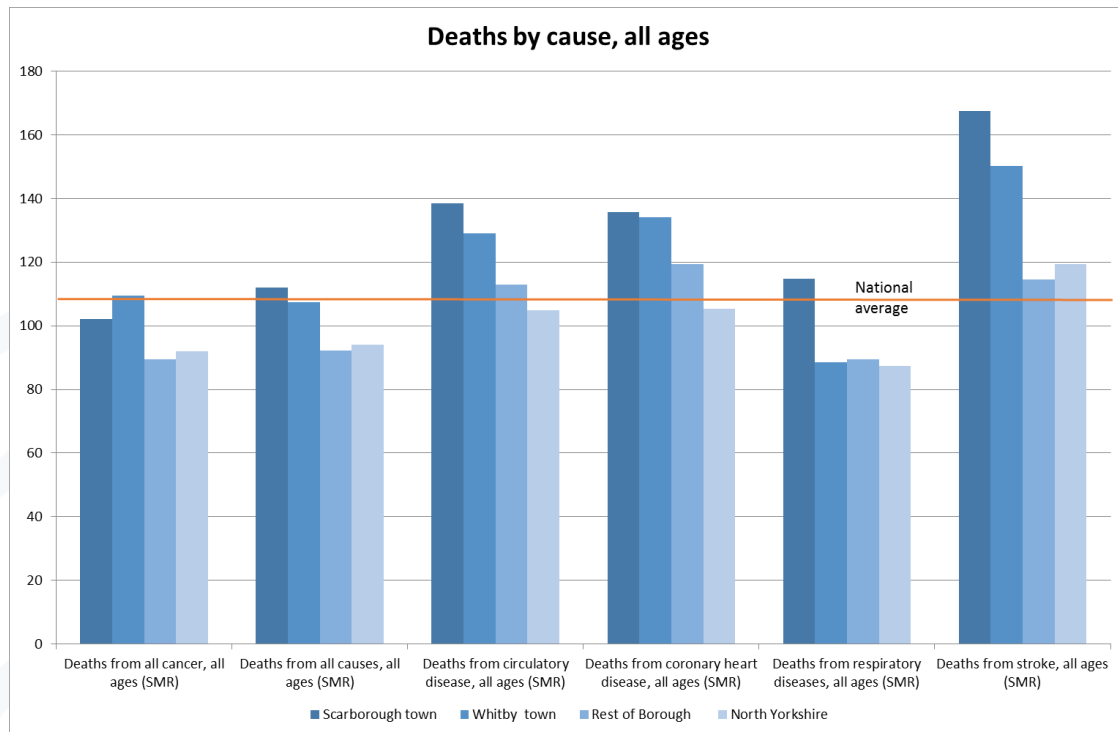
Looked After Children Placements as at 30/09/2014



50 Looked After Children placed in Scarborough town, 3 in Whitby and 36 in the district outside of the two towns. 448 across North Yorkshire.

Source: NYCC September 2014

Health



Early deaths from cardiovascular diseases are worse than the national average.

Levels of adult excess weight and physical activity in Scarborough district are worse than the England average

Source: PHE Local Health Indicators / Public Health England Health Profile 2014

777 estimated hospital stays per year in Scarborough district as a result of alcohol related harm, **22%** of the North Yorkshire total

67 People killed and seriously injured on roads in Scarborough district

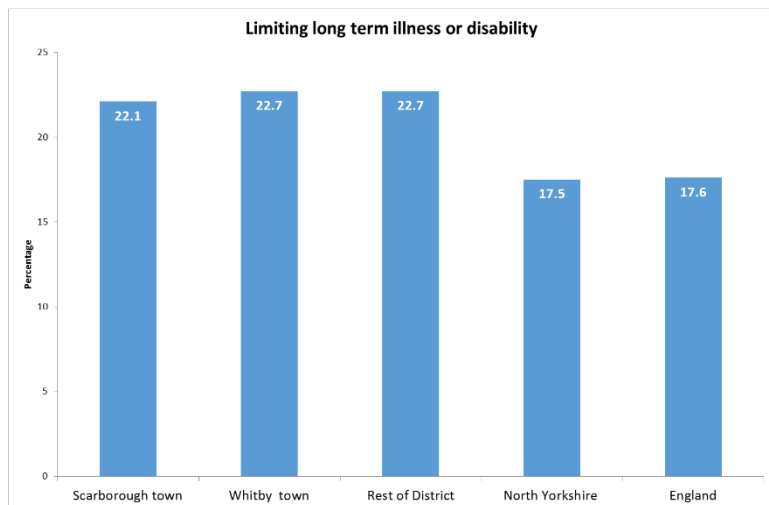
Find more health statistics on



www.DataNorthYorkshire.org

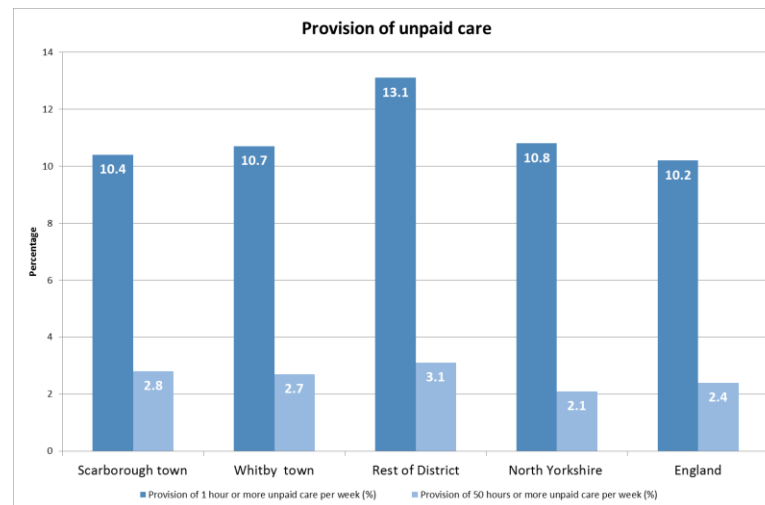
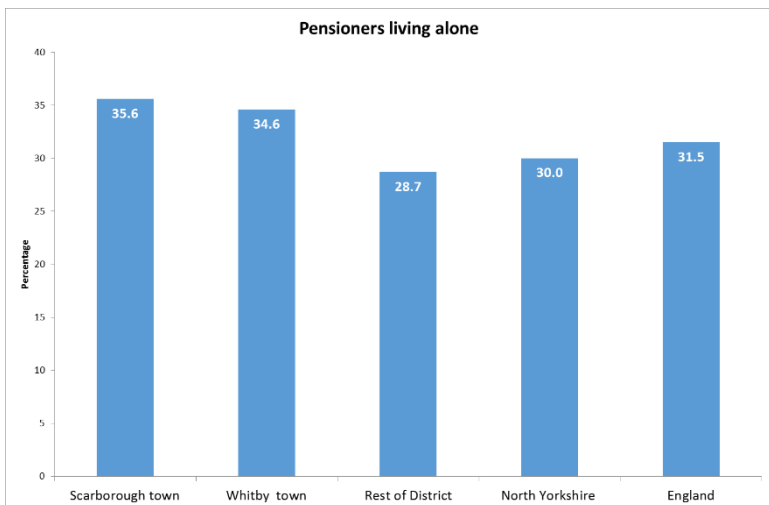
246 Estimated smoking related deaths per year in Scarborough district, **24%** of the premature deaths in North Yorkshire

Health



People in Scarborough town and Whitby are less likely to provide unpaid care and more likely to be living on their own than in the rural areas of the district

People in Scarborough district are more likely to state that they have a limiting long term illness or disability than North Yorkshire as a whole



Homelessness

36% of children and young people (16-25) in North Yorkshire who presented as homeless to homeless hub were from Scarborough district

Source: NYCC, Q2 2014



Locality	Number of young people referred to Homelessness Hub during month
Scarborough Town	50
Whitby Town	7
Rest of District	9

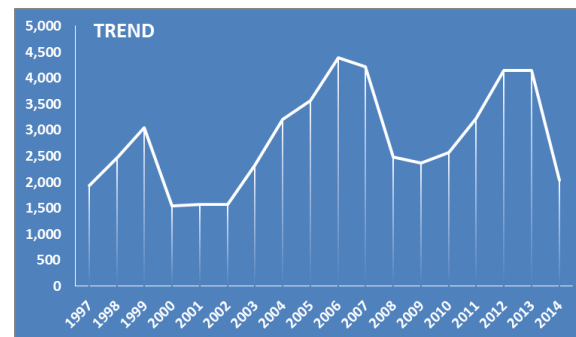
Source: NYCC, October 2014

83 Households accepted as being **homeless and in priority need**, 26% of the North Yorkshire total, the **joint highest number in North Yorkshire**

Source: April 2013-14 DCLG

14% of Scarborough applications to the North Yorkshire Local Assistance Fund (406 cases) are classed as 'homelessness/risk of homelessness' compared to 16% of all applications county wide

Source: NYLAF data 2013/14



2,033 households on the housing waiting list, 25% of the North Yorkshire total

Source: April 2014 DCLG

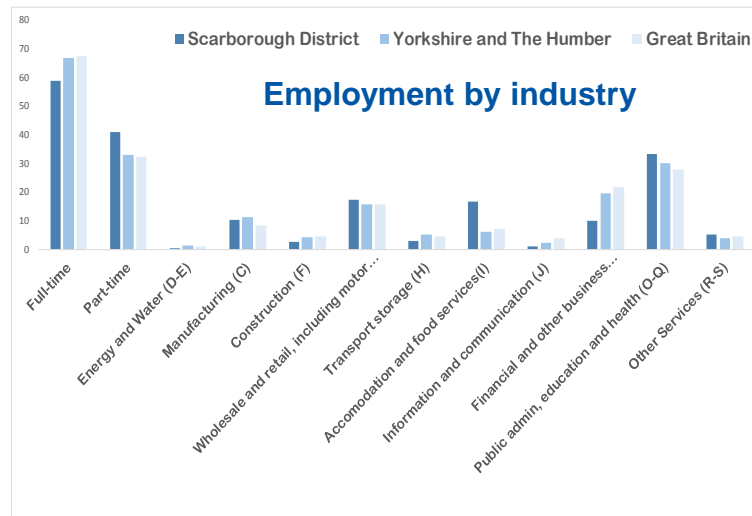
Find more housing information on



www.DataNorthYorkshire.org

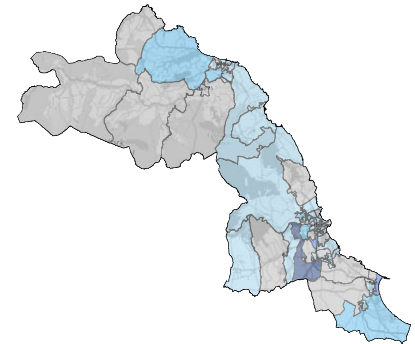


Economy



Employment Creation – District (2012-13)

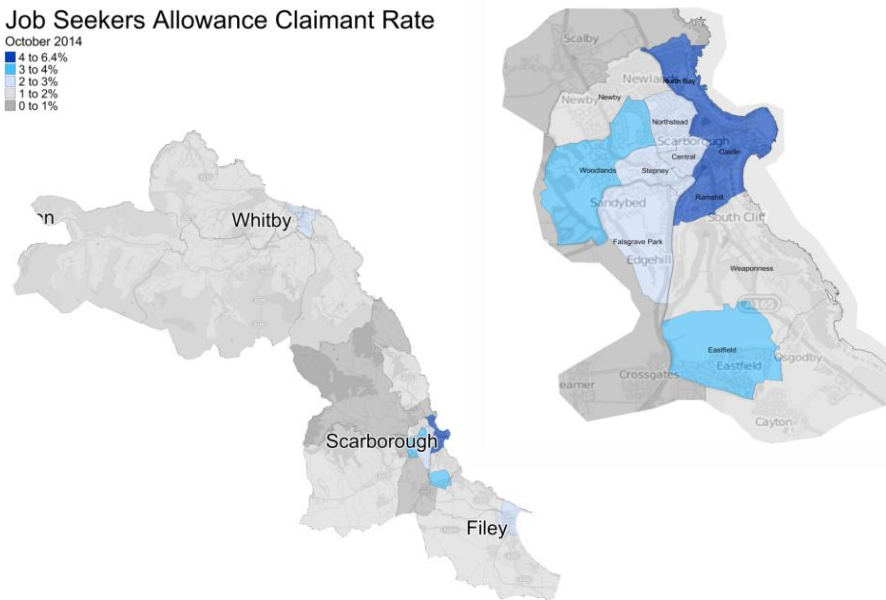
3.1% Growth in Employment creation



5th in the Region Above the regional %

Job Seekers Allowance Claimant Rate

WARD	% JSA Claimants	Job Seekers Allowance Claimant Rate
Castle	5.9	
North Bay	4.9	
Ramshill	4.3	
Woodlands	3.6	
Eastfield	3.5	
Filey	2.8	
Whitby West Cliff	2.7	
Central	2.5	
Falsgrave Park	2.4	
Stepney	2.0	
Northstead	2.0	
Streonshalh	2.0	
Great Britain	2.00	
Mayfield	1.4	
Hertford	1.4	
Mulgrave	1.3	
Cayton	1.3	
North Yorkshire	1.1	
Fylingdales	1.0	
Weaponness	1.00	
Danby	0.9	
Newby	0.9	
Derwent Valley	0.8	
Seamer	0.7	
Esk Valley	0.7	
Lindhead	0.6	
Scalby, Hackness and Stainton	0.4	



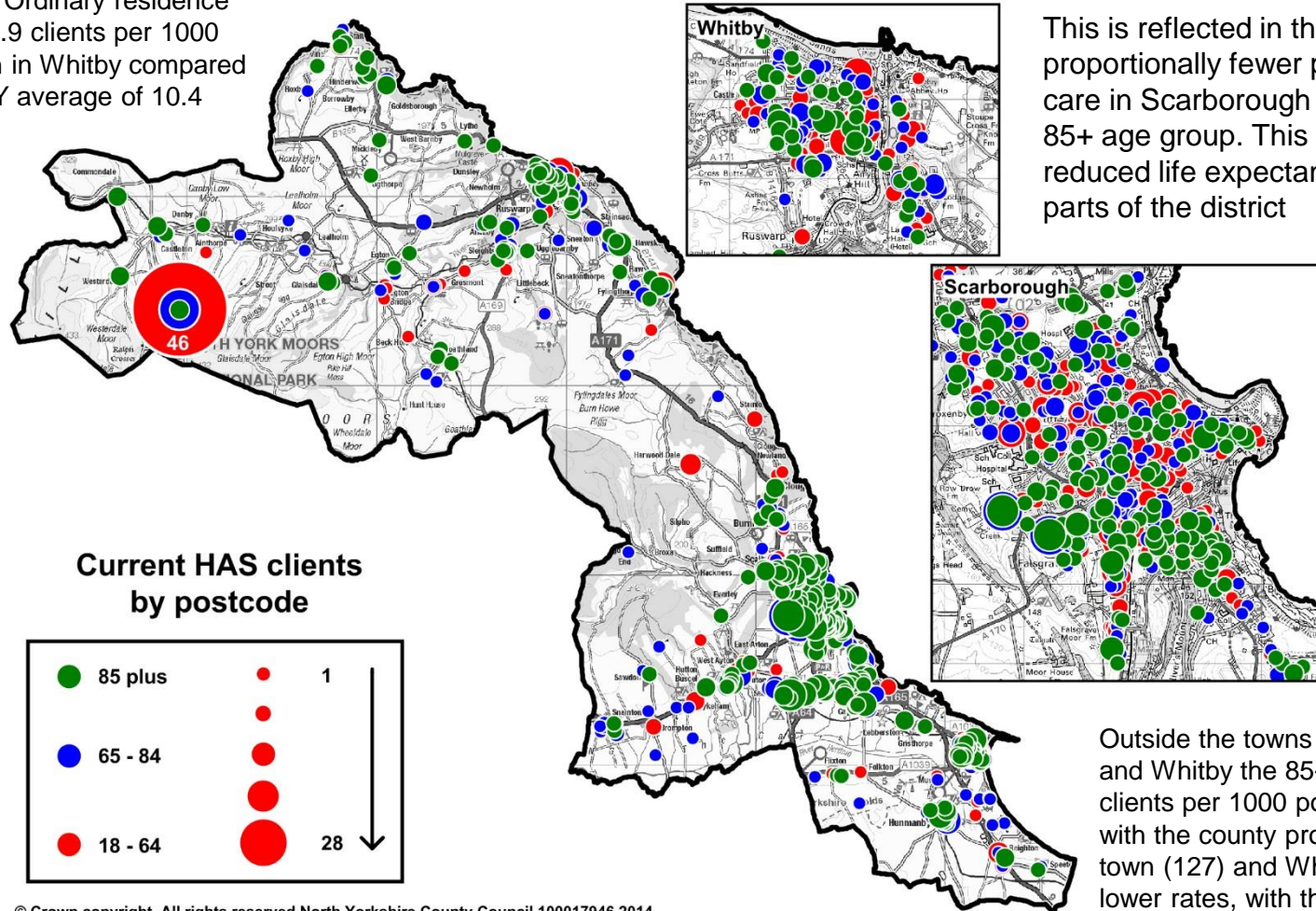
Barnsley	6.1%
Hambleton	6.0%
Ryedale	5.7%
Calderdale	3.3%
Scarborough	3.1%
Doncaster	2.9%
Leeds	2.9%
Richmondshire	2.3%
Bradford	1.8%
Selby	1.8%
Kingston upon Hull, City of	1.5%
East Riding of Yorkshire	1.5%
Rotherham	1.4%
York	0.9%
North East Lincolnshire	0.8%
Wakefield	0.7%
Sheffield	0.7%
North Lincolnshire	0.0%
Kirklees	-0.1%
Harrogate	-0.1%
Craven	-1.3%

Health & Adult Services Clients

Higher rates among ages 18-64 due to more providers in the area (Botton, Wilf Ward, Avalon) leading to Ordinary residence issues. 15.9 clients per 1000 population in Whitby compared with an NY average of 10.4

Scarborough town has a higher rate of older people in the 65-84 age group needing services (47.6 per 1000 population compared with 40.4 outside Scarborough and Whitby town)

This is reflected in that proportionally fewer people need care in Scarborough town at the 85+ age group. This is due to the reduced life expectancy in some parts of the district



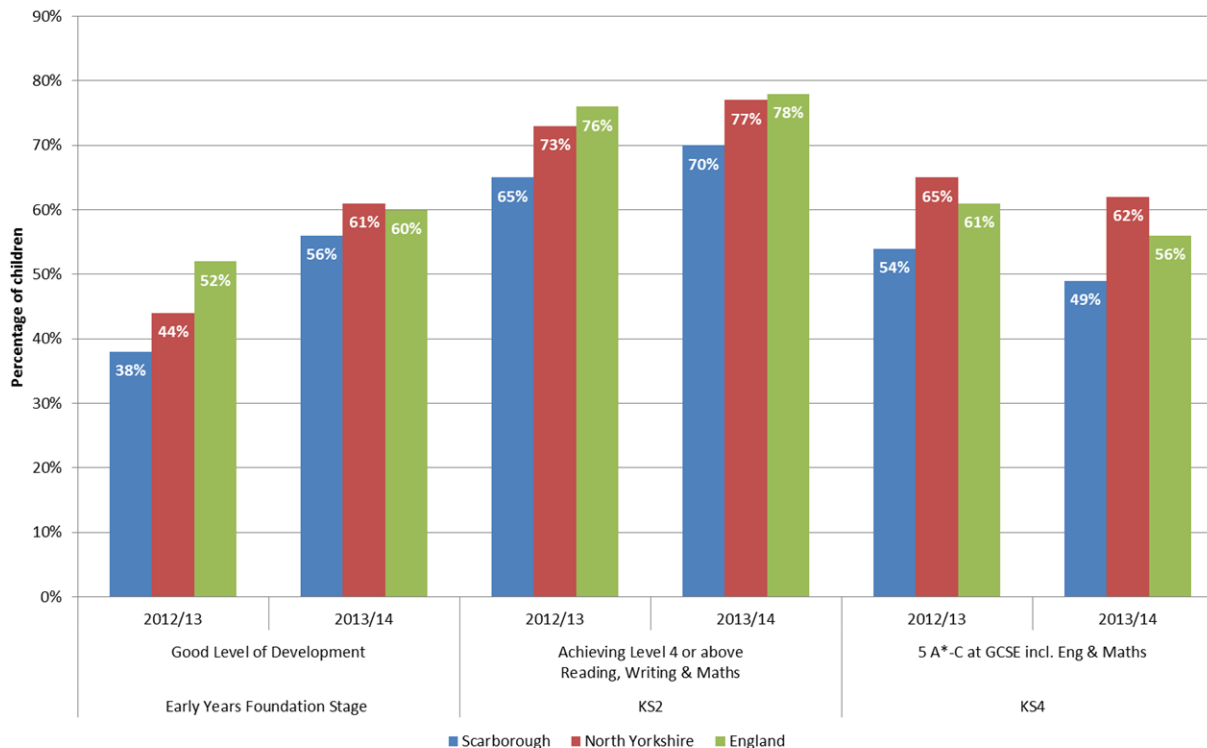
© Crown copyright. All rights reserved North Yorkshire County Council 100017946 2014

Outside the towns of Scarborough and Whitby the 85+ age group (132 clients per 1000 population) is in line with the county profile. Scarborough town (127) and Whitby (111) have lower rates, with the demand for services now being higher in the more affluent country areas

Education



Education outcomes - benchmark indicators



Child development at 5 is **51.7%** in Scarborough town and **42.4%** in Whitby town below the level for the district (56%)

Source: PHE Local Health indicators 2014

239 (4.1%) of secondary pupils had one or more fixed periods of exclusion. **3.6%** nationally

Source: School census 2012/13

6.8% of secondary school pupils were absent compared to **5.9%** across the county and **5.8%** nationally

Source: School census 2012/13

6.2% of secondary school pupils were persistently absent compared to **4.0%** across the county and **6.4%** nationally

Source: School census 2012/13

Find more education statistics on



www.DataNorthYorkshire.org

Main customer groups in Scarborough Town

9% of households are Group 5B. These are often married residents with an older than average age profile. They live in semi-detached housing that they own outright or with a mortgage. Rental levels are low. Administrative and sales occupations are common, self-employment and home working less so.

22% of households are Group 7. These residents often live in terraced housing that they rent privately or own with a mortgage. There is a younger age profile than found elsewhere. Marriage levels are lower than average and adult residents are often co-habiting or living on their own with above average numbers of lone parent households. Economic activity levels are high but benefit claimant levels are also high. Car ownership is low and a significant proportion travel to work on foot.

7% of households are Group 8B. These residents are often aged 65 - 84 and living in socially rented properties, many of these semis or flats. The proportion of residents aged 85+ is almost three times the county average. Many of the residents are living on their own, often widowed. Likely to be retired, the proportion of residents without any qualification is the highest in the county. There is a low level of passport ownership. This group has the worst level of health of all groups.

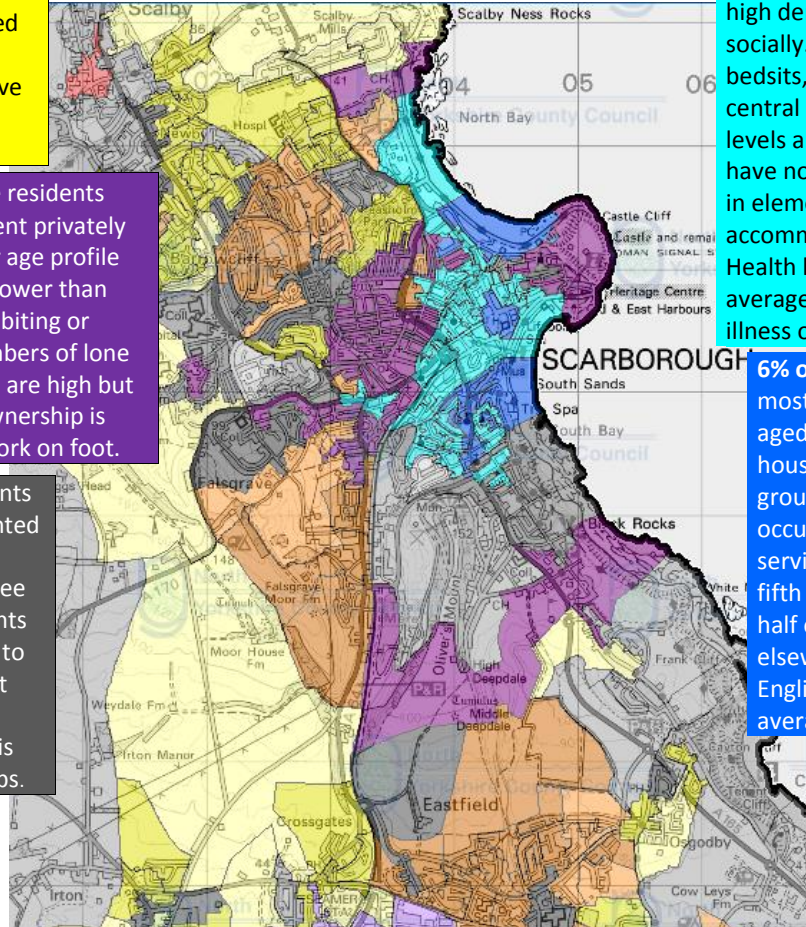
8% of households are Group 8A. These residents likely to be aged over 65 and living in privately or socially rented flats. Many of these residents are living on their own, often widowed. Some are living in communal establishments. They are likely to be retired and with a below average level of health. ESA and incapacity benefit claimant levels are high. This group is not as well qualified as some others and over a quarter of residents have no qualifications.

8% of households are Group 9A. This group is often comprised of families living in semi-detached or terraced housing that they own although some rent socially. There is a higher proportion of residents aged 0-15 than seen elsewhere. These residents are likely to be employed but qualification levels are lower than average and semi-skilled and unskilled occupations are common. The level of benefits take up is slightly higher than average. Health levels are below average.

19% of households are Group 6A. These are often single residents, aged 16 to 29 and living in high density urban flats rented privately or socially. A quarter of properties, often B&Bs or bedsits, are vacant. One in ten properties has no central heating. Unemployment and other benefit levels are very high. Almost a third of residents have no qualifications. Those in work often work in elementary occupations and the accommodation and food service industries. Health levels are poor and more households than average contain an individual with a life limiting illness or disability.

6% of households are Group 6B. These are mostly single residents with a high proportion aged 25 to 44. They live in high density urban housing, mostly flats that they rent privately. This group often work in service, sales or elementary occupations in the accommodation and food services sector or in wholesale and retail trades. A fifth of residents were born outside of the UK, half of these in other EU countries and half elsewhere. Many of these residents do not have English as a main language. Health is worse than average and benefits levels higher.

14% of households are Group 9B. These are often families or lone parents living in socially rented semi-detached and terraced housing in urban areas. The group has a young age profile. More likely to be unemployed or looking after home and family than other groups, a high proportion of households have no adults in employment. A third have no qualifications. Those in work tend to be in semi-skilled or unskilled jobs in the manufacturing or service sectors. Women tend to work part time. Health is poor.



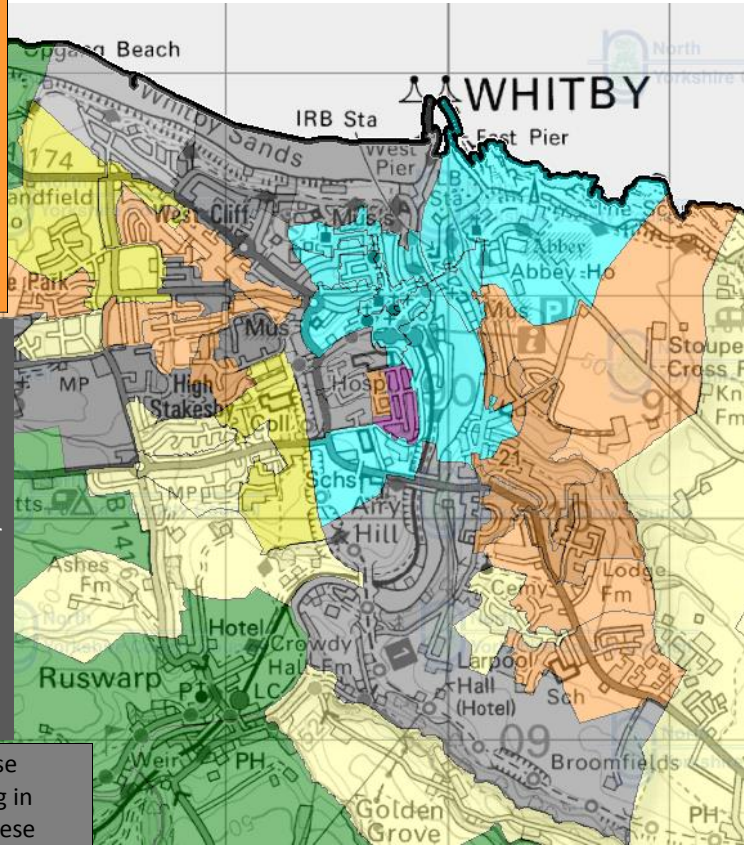
Main customer groups within Whitby Town

17% of households are Group 9A. This group is often comprised of families living in semi-detached or terraced housing that they own although some rent socially. There is a higher proportion of residents aged 0-15 than seen elsewhere. These residents are likely to be employed but qualification levels are lower than average and semi-skilled and unskilled occupations are common. The level of benefits take up is slightly higher than average. Health levels are below average.

12% of households are Group 8B.

These residents are often aged 65 - 84 and living in socially rented properties, many of these semis or flats. The proportion of residents aged 85+ is almost three times the county average. Many of the residents are living on their own, often widowed. Likely to be retired, the proportion of residents without any qualification is the highest in the county. There is a low level of passport ownership. This group has the worst level of health of all groups.

11% of households are Group 8A. These residents likely to be aged over 65 and living in privately or socially rented flats. Many of these residents are living on their own, often widowed. Some are living in communal establishments. They are likely to be retired and with a below average level of health. ESA and incapacity benefit claimant levels are high. This group is not as well qualified as some others and over a quarter of residents have no qualifications.



12% households are Group 5A. These are often married residents aged 45-74 living in detached or semi-detached housing that they own outright or with a mortgage. Health levels are average. Car ownership levels are slightly higher than average.










20% of households are Group 6A. These are often single residents, aged 16 to 29 and living in high density urban flats rented privately or socially. A quarter of properties, often B&Bs or bedsits, are vacant. One in ten properties has no central heating. Unemployment and other benefit levels are very high. Almost a third of residents have no qualifications. Those in work often work in elementary occupations and the accommodation and food service industries. Health levels are poor and more households than average contain an individual with a life limiting illness or disability.

14% of households are Group 9B.










These are often families or lone parents living in socially rented semi-detached and terraced housing in urban areas. The group has a young age profile. More likely to be unemployed or looking after home and family than other groups, a high proportion of households have no adults in employment. A third have no qualifications. Those in work tend to be in semi-skilled or unskilled jobs in the manufacturing or service sectors. Women tend to work part time. Health is poor.

96 of households are Group 5B. These are often married residents with an older than average age profile. They live in semi-detached housing that they own outright or with a mortgage. Rental levels are low. Administrative and sales occupations are common, self-employment and home working less so.

Customer groups

NYCC Customer Group		% of households		Short description	Location
		Scarborough	NY		
5A		11.7%	8.9%	Married (45-74), detached or semi-detached homes. Near to but outside of the main settlements.	Burniston, Castleton, Caytom, Cloughton, Crossgates, Danby, East Ayton, Filey, Fylingdales Moor, Fylingthorpe, Glaisdale, Gristhorpe, Hawsker, Hinderwell, Hunmanby, Lebberston, Muston, Osgodby, Ruston, Scalby, Scarborough, Seamer, Sleights, Snainton, Stainsacre, Whitby
6A		11.3%	2.5%	Low income singles (16-29) in private rented flats	Scarborough, Whitby
7		10.8%	10.8%	Terraced housing , 30-44, co-habiting or single, some lone parents.	Scarborough, Whitby
3B		10.2%	5.1%	Active younger pensioners (65-84) living in detached homes.	Aislaby, Aytons, Burniston, Cayton, Cloughton, Filey, Hunmanby, Hunmanby Moor, Irton, Mulgrave, Osgodby, Robin Hood's Bay, Scalby, Seamer, Sleights, Staithes, Whitby
5B		10.0%	9.0%	Married (45-74), semi-detached housing. Administrative and sales occupations .	East Ayton, Cayton, Crossgates, Osgodby, Scarborough, Seamer, Sleights, West Ayton, Whitby
9B		9.9%	4.9%	Low income families or lone parents in social rented properties.	Eastfield, Filey, Scarborough, Staithes, Whitby
9A		9.7%	7.8%	Families in semis or terraces. Likely to be employed in semi-skilled and unskilled occupations are common.	Cayton, Eastfield, Filey, Hinderwell, Hunmanby, Killerby, Scarborough, Sleights, Staithes, Whitby
8B		7.4%	3.9%	Pensioners in socially rented semis or flats. Many without qualifications.	Eastfield, Filey, Hunmanby, Osgodby, Scarborough, Seamer, Whitby
8A		6.5%	3.1%	Single pensioners living in private or socially rented flats. Some communal establishments.	Filey, Scarborough, Whitby

Customer groups

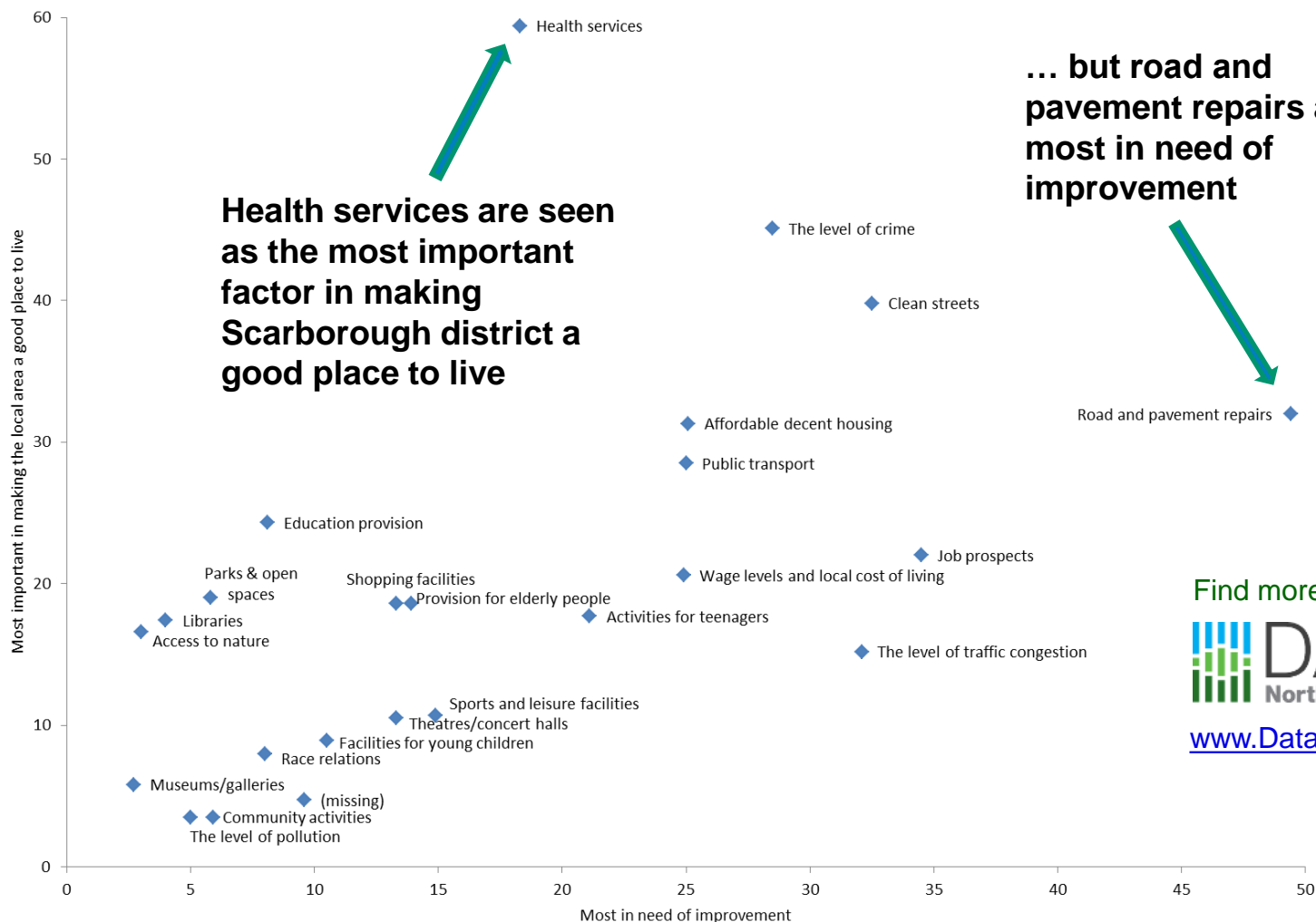
NYCC Customer Group	% of households		Short description	Location
	Scarborough	NY		
2C 	5.6%	5.1%	Detached homes many privately rent. Work in agriculture, skilled trades and often self-employed .	Brompton, Egton, Ellerby, Everly, Goathland, Goldsborough, Grosmont, Harwood Dale, Hunmanby, Kettleness, Lealholm, Mickleby, Raithwaite, Robin Hoods Bay, Raw, Reighton, Runswick Bay, Ruswarp, Sandsend, Silpho, Sneaton, Staithes, Suffield, Ugglebarnby, Ugthorpe, Wykeham
6B 	3.0%	2.3%	Single (25 to 44), private rented flats. One fifth were born outside of the UK.	Scarborough
2A 	1.5%	3.7%	Couples (45-64) detached homes work in agriculture, hunting and forestry	Folkton, Flixton, Glaisdale, Ravenscar, Sawdon, Snainton, Staintondale
2B 	0.7%	8.6%	Couples (45-64) detached homes, agricultural, managerial, professional or skilled trades occupations.	Broxa, Castleton, Comondale, Hackness, Langdale, Troutdale, Westerdale
1 	0.6%	9.1%	Working professionals (30-44) with children (0-15)	Seamer
3A 	0.5%	1.8%	Older pensioners (75+) living on own in flats / communal premises.	Scarborough
4B 	0.3%	2.7%	Highly qualified managers, directors and professionals in large flats or detached. Number born outside the UK.	Botton
4A 	0.2%	9.4%	Aged 45-74 living in large detached housing. Either retired or work as managers, directors, professionals .	Scalby
10 	0.0%	1.5%	Young couples or families, renting or single people living communally establishments usually on military bases.	

Citizen's Panel 2013/14

Scarborough Respondents Priorities

Citizen's Panel members were given a list of 23 factors and asked:

- (1) to list up to 5 factors that are most important in making somewhere a good place to live
- (2) to list up to 5 factors that most need improving in their local area



Find more Citizen's Panel data on



www.DataNorthYorkshire.org

Produced by Policy & Partnerships together with
Public Health Intelligence, Business Intelligence
HAS Performance & Change and
CYPS Strategy and Commissioning

For more information contact
population.statistics@northyorks.gov.uk